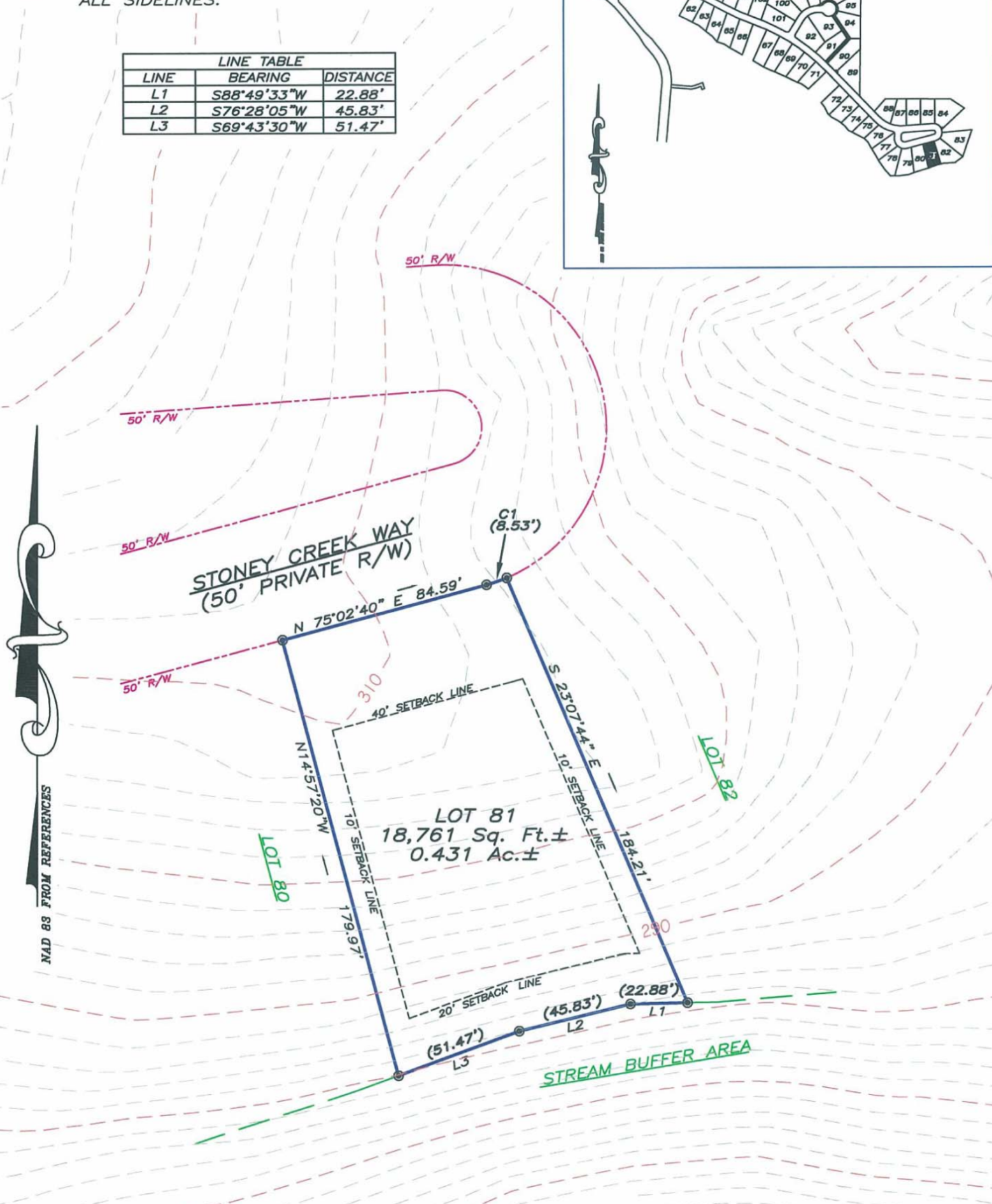
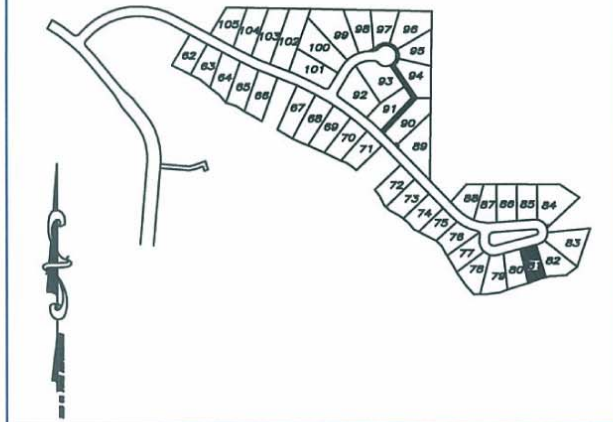


NOTES—

- a.) THERE IS A 10' UTILITY AND MAINTENANCE EASEMENT ACROSS ALL LOT FRONTS THAT INCLUDES PEDESTRIAN WALKWAYS.
- b.) REFER TO RECORDED PLAT FOR EASEMENTS AND RESTRICTIONS.
- c.) THERE IS A 5' DRAINAGE EASEMENT ALONG ALL SIDELINES.

LINE TABLE		
LINE	BEARING	DISTANCE
L1	S88°49'33"W	22.88'
L2	S76°28'05"W	45.83'
L3	S69°43'30"W	51.47'

VICINITY MAP



NAD 83 FROM REFERENCES

CURVE TABLE				
CURVE	LENGTH	RADIUS	CHORD BRG	CHORD LENGTH
C1	8.53'	65.00'	N71°17'01"E	8.53'

SYMBOL LEGEND

- BOUNDARY CORNER
- COMPUTED POINT



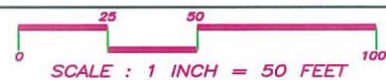
PLOT PLAN

"THE LEGACY AT JORDAN LAKE" PHASE ONE — LOT 81  
 NEW HOPE TOWNSHIP ~ CHATHAM COUNTY ~ NORTH CAROLINA

PRELIMINARY NOT FOR SALES, CONVEYANCE, RECORDATION OR CONSTRUCTION

**ABSOLUTE LAND SURVEYING  
 AND MAPPING, P.C.**

MAILING ADDRESS ~ 117 NORTH CHATHAM AVENUE, SILER CITY, N.C. 27344  
 PHYSICAL ADDRESS ~ 964 EAST STREET, SUITE 210, PITTSBORO, N.C. 27312  
 (919) 542-0074 FAX (919)542-3751



JOB NUMBER: 040509  
 DATE: FEBRUARY 14, 2006