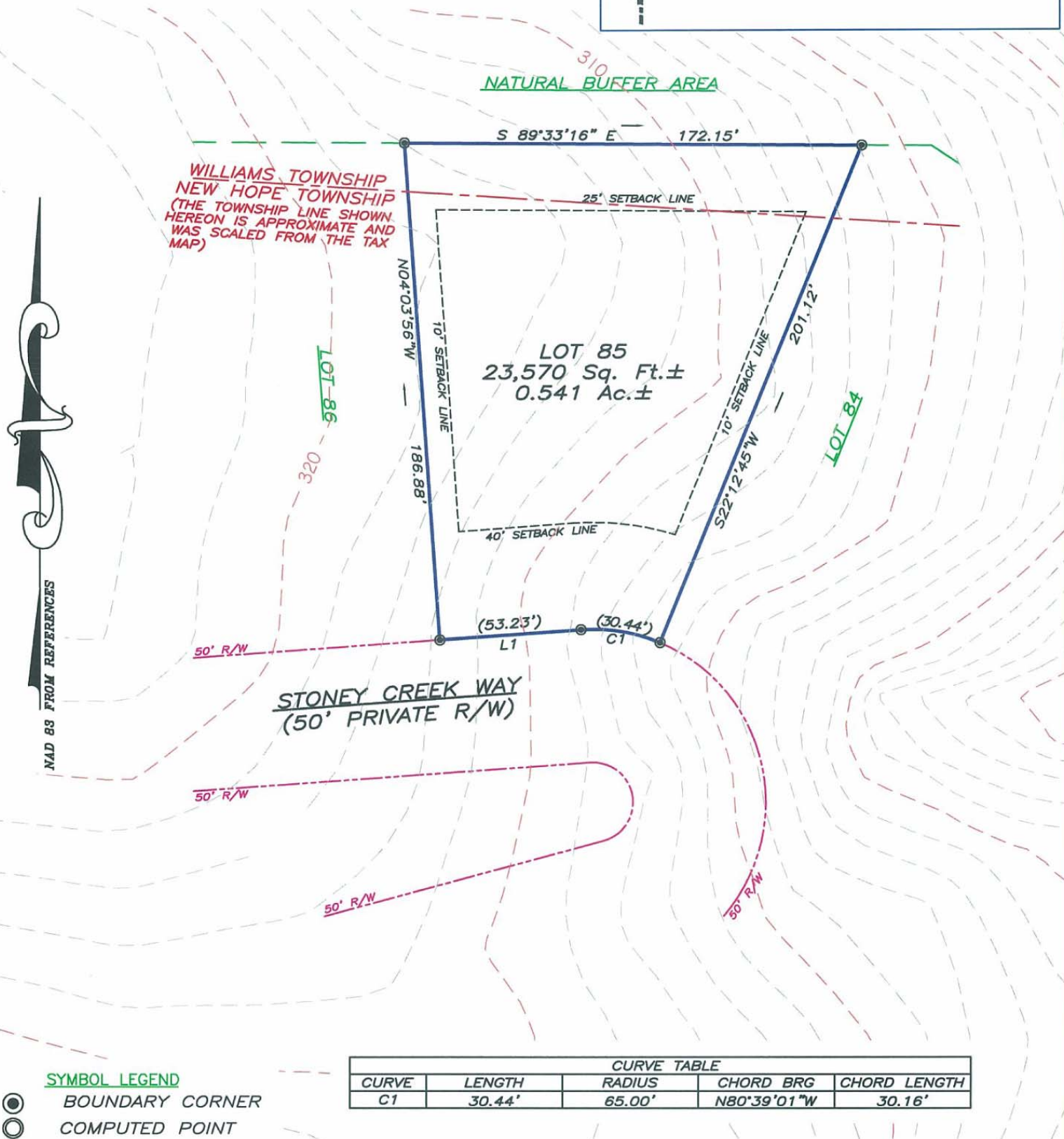
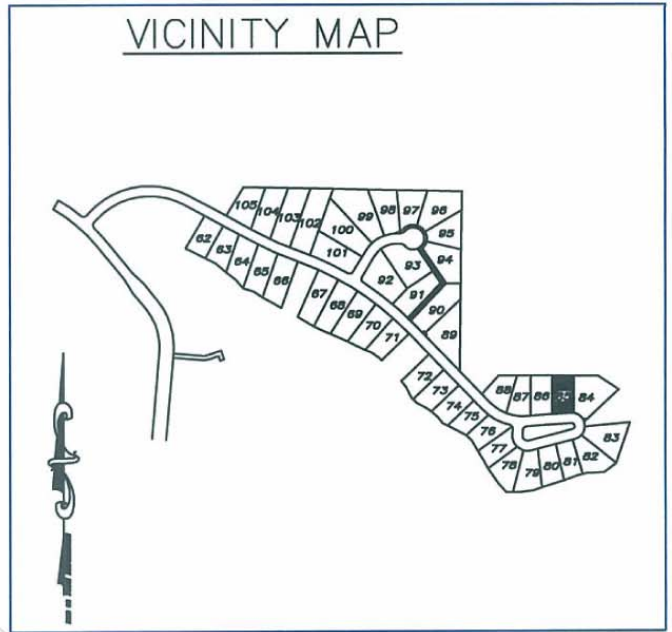


NOTES-

- a.) THERE IS A 10' UTILITY AND MAINTENANCE EASEMENT ACROSS ALL LOT FRONTS THAT INCLUDES PEDESTRIAN WALKWAYS.
- b.) REFER TO RECORDED PLAT FOR EASEMENTS AND RESTRICTIONS.
- c.) THERE IS A 5' DRAINAGE EASEMENT ALONG ALL SIDELINES.

LINE TABLE		
LINE	BEARING	DISTANCE
L1	S85°56'04"W	53.23'



WILLIAMS TOWNSHIP  
NEW HOPE TOWNSHIP  
(THE TOWNSHIP LINE SHOWN  
HEREON IS APPROXIMATE AND  
WAS SCALED FROM THE TAX  
MAP)

NAD 83 FROM REFERENCES

CURVE TABLE				
CURVE	LENGTH	RADIUS	CHORD BRG	CHORD LENGTH
C1	30.44'	65.00'	N80°39'01"W	30.16'

- SYMBOL LEGEND**
- BOUNDARY CORNER
  - COMPUTED POINT



**PLOT PLAN**  
 "THE LEGACY AT JORDAN LAKE" PHASE ONE - LOT 85  
 NEW HOPE TOWNSHIP ~ CHATHAM COUNTY ~ NORTH CAROLINA  
 PRELIMINARY NOT FOR SALES, CONVEYANCE, RECORDATION OR CONSTRUCTION

**ABSOLUTE LAND SURVEYING  
AND MAPPING, P.C.**  
 MAILING ADDRESS ~ 117 NORTH CHATHAM AVENUE, SILER CITY, N.C. 27344  
 PHYSICAL ADDRESS ~ 964 EAST STREET, SUITE 210, PITTSBORO, N.C. 27312  
 (919) 542-0074 FAX (919)542-3751

SCALE : 1 INCH = 50 FEET  
 JOB NUMBER: 040509  
 DATE: FEBRUARY 14, 2006