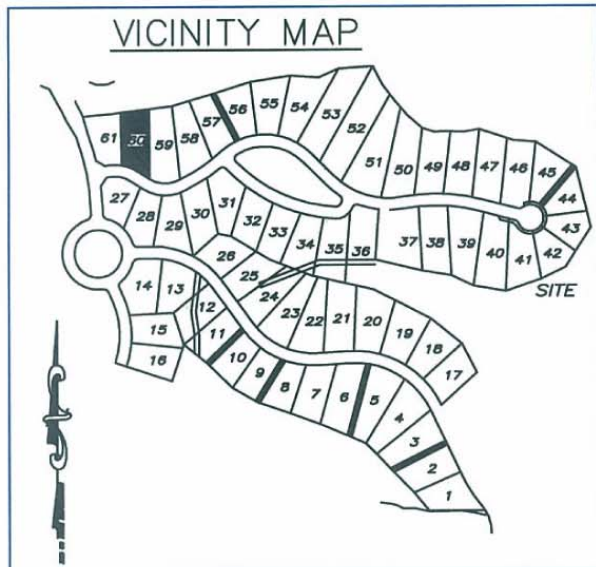


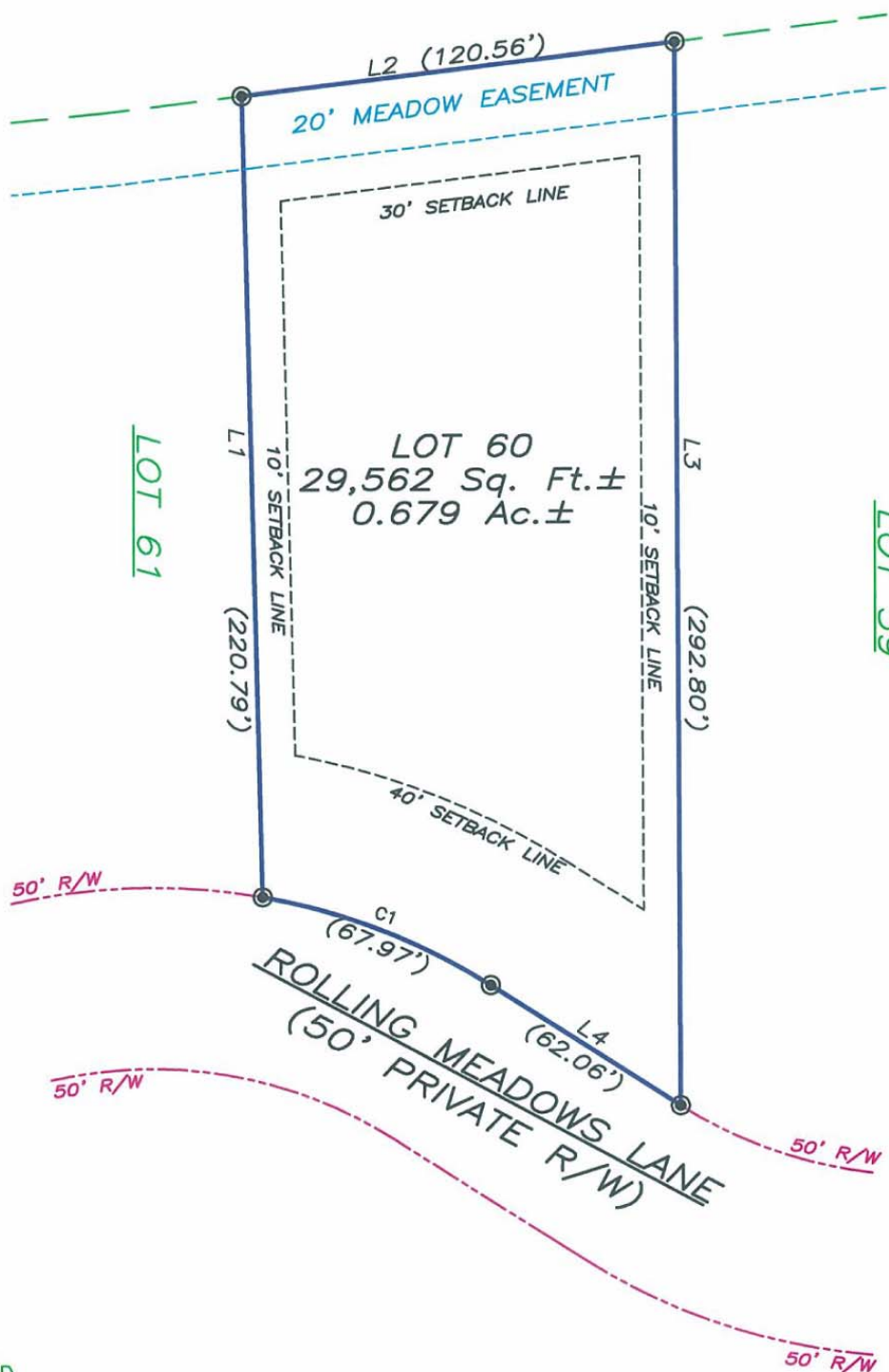
NOTES—

- a.) THERE IS A 10' UTILITY AND MAINTENANCE EASEMENT ACROSS ALL LOT FRONTS THAT INCLUDES PEDESTRIAN WALKWAYS.
- b.) REFER TO RECORDED PLAT FOR EASEMENTS AND RESTRICTIONS.
- c.) THERE IS A 5' DRAINAGE EASEMENT ALONG ALL SIDELINES.



LINE TABLE		
LINE	BEARING	DISTANCE
L1	N01°23'47"W	220.79
L2	N83°04'59"E	120.56
L3	N00°13'27"W	292.80
L4	S57°42'09"E	62.06

MEADOW AREA NINE



CURVE TABLE			
CURVE	LENGTH	RADIUS	CHORD BRG
C1	67.97	175.00	N68°49'45"W
			CHORD LENGTH
			67.54



SYMBOL LEGEND

- BOUNDARY CORNER
- COMPUTED POINT



PLOT PLAN  
 "THE LEGACY AT JORDAN LAKE" PHASE ONE — LOT 60  
 NEW HOPE TOWNSHIP ~ CHATHAM COUNTY ~ NORTH CAROLINA  
PRELIMINARY NOT FOR SALES, CONVEYANCE, RECORDATION OR CONSTRUCTION

ABSOLUTE LAND SURVEYING  
 AND MAPPING, P.C.

MAILING ADDRESS ~ 117 NORTH CHATHAM AVENUE, SILER CITY, N.C. 27344  
 PHYSICAL ADDRESS ~ 964 EAST STREET, SUITE 210, PITTSBORO, N.C. 27312  
 (919) 542-0074 FAX (919)542-3751



JOB NUMBER: 040509  
 DATE: FEBRUARY 14, 2006