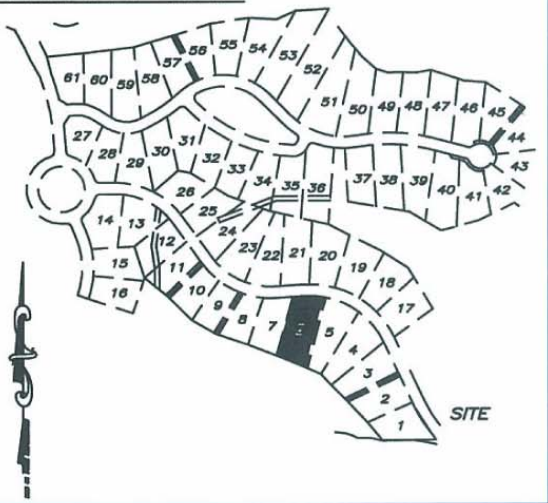


VICINITY MAP



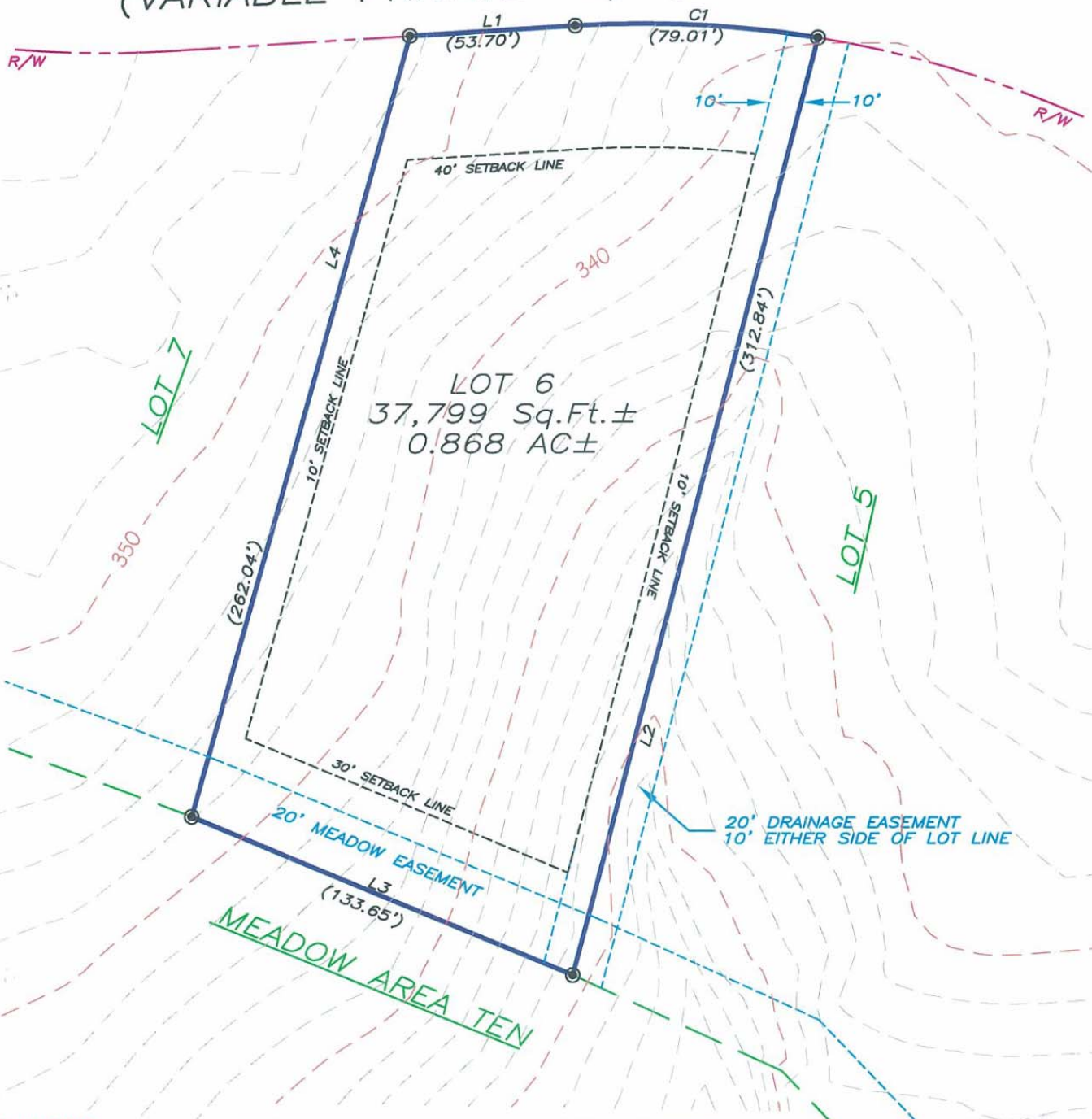
NOTES-

- a.) THERE IS A 10' UTILITY AND MAINTENANCE EASEMENT ACROSS ALL LOT FRONTS THAT INCLUDES PEDESTRIAN WALKWAYS.
- b.) REFER TO RECORDED PLAT FOR EASEMENTS AND RESTRICTIONS.
- c.) THERE IS A 5' DRAINAGE EASEMENT ALONG ALL SIDELINES.

LINE TABLE		
LINE	BEARING	DISTANCE
L1	S86°31'04"W	53.70
L2	N14°39'56"E	312.84
L3	N67°31'53"W	133.65
L4	S15°34'39"W	262.04

LEGACY FALLS DRIVE NORTH
(VARIABLE PRIVATE R/W)

NAD 83 FROM REFERENCES



SYMBOL LEGEND

● BOUNDARY CORNER

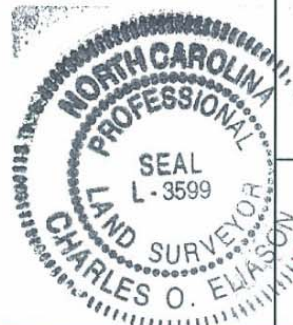
CURVE TABLE

CURVE	LENGTH	RADIUS	CHORD BRG	CHORD LENGTH
C1	79.01	350.00	N87°00'54"W	78.85

PLOT PLAN

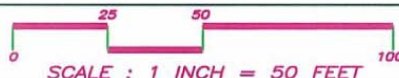
"THE LEGACY AT JORDAN LAKE" PHASE ONE - LOT 6
NEW HOPE TOWNSHIP ~ CHATHAM COUNTY ~ NORTH CAROLINA

PRELIMINARY NOT FOR SALES, CONVEYANCE, RECORDATION OR CONSTRUCTION



ABSOLUTE LAND SURVEYING
AND MAPPING, P.C.

MAILING ADDRESS ~ 117 NORTH CHATHAM AVENUE, SILER CITY, N.C. 27344
PHYSICAL ADDRESS ~ 964 EAST STREET, SUITE 210, PITTSBORO, N.C. 27312
(919) 542-0074 FAX (919) 542-3751



JOB NUMBER: 040509
DATE: JANUARY 5, 2006