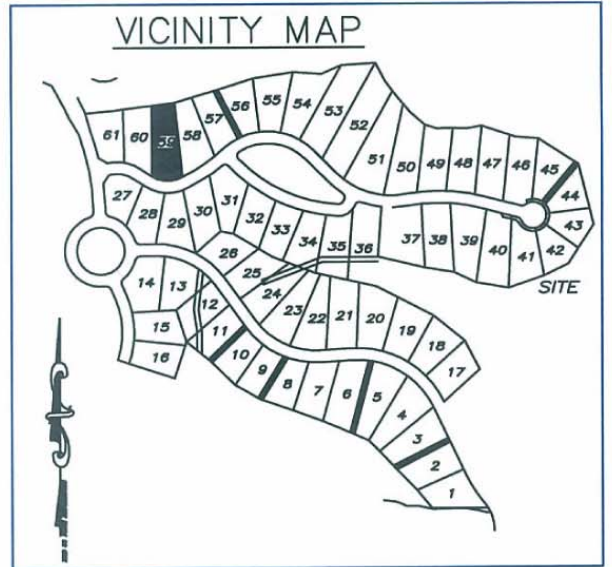


NOTES—

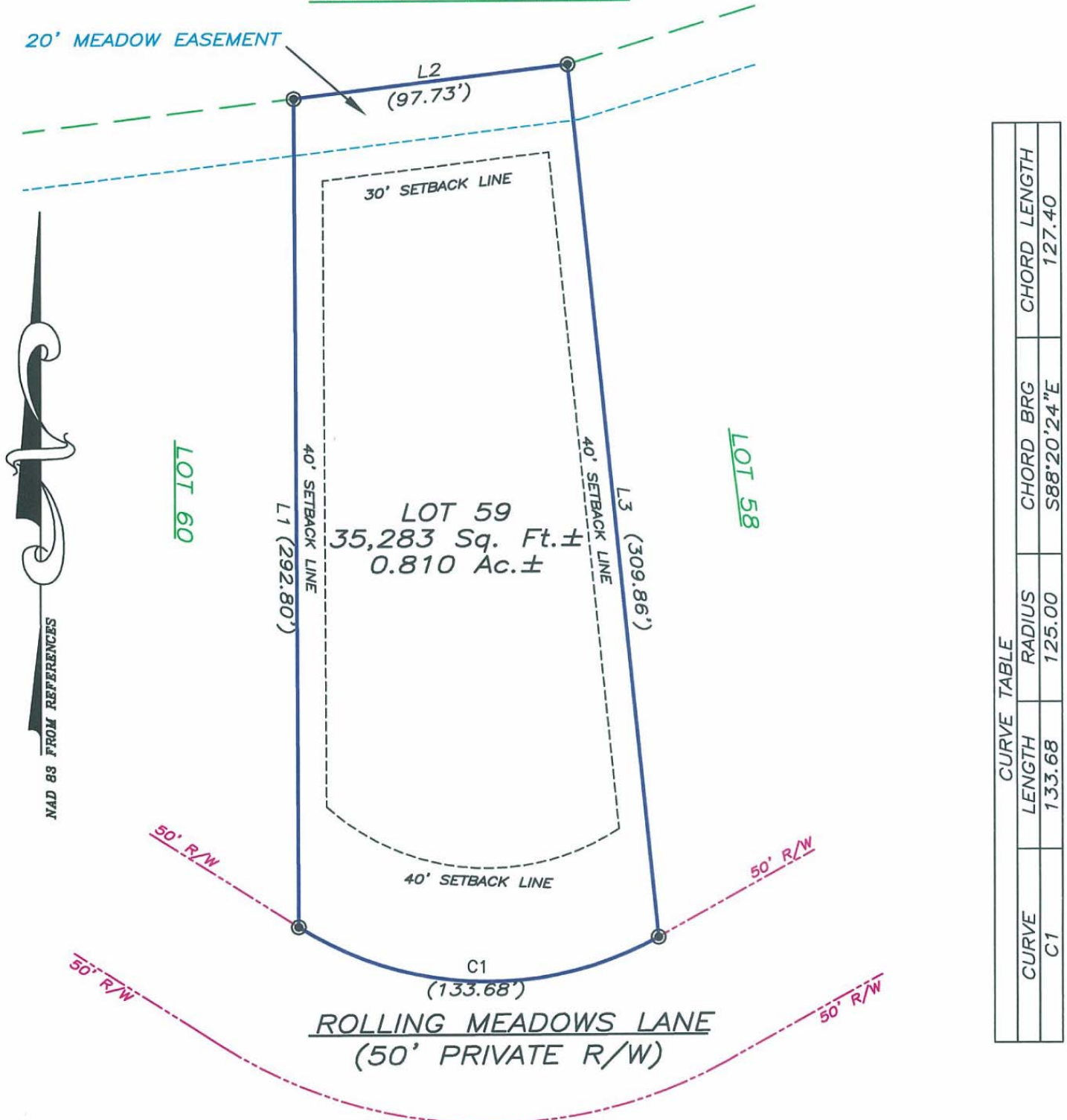
- a.) THERE IS A 10' UTILITY AND MAINTENANCE EASEMENT ACROSS ALL LOT FRONTS THAT INCLUDES PEDESTRIAN WALKWAYS.
- b.) REFER TO RECORDED PLAT FOR EASEMENTS AND RESTRICTIONS.
- c.) THERE IS A 5' DRAINAGE EASEMENT ALONG ALL SIDELINES.

LINE TABLE		
LINE	BEARING	DISTANCE
L1	N00°13'27"W	292.80
L2	N83°04'59"E	97.73
L3	S05°49'51"E	309.86



MEADOW AREA NINE

20' MEADOW EASEMENT



CURVE TABLE		
CURVE	LENGTH	RADIUS
C1	133.68	125.00
		CHORD BRG
		S88°20'24"E
		CHORD LENGTH
		127.40



SYMBOL LEGEND

- BOUNDARY CORNER
- COMPUTED POINT



PLOT PLAN
 "THE LEGACY AT JORDAN LAKE" PHASE ONE — LOT 59
 NEW HOPE TOWNSHIP ~ CHATHAM COUNTY ~ NORTH CAROLINA
 PRELIMINARY NOT FOR SALES, CONVEYANCE, RECORDATION OR CONSTRUCTION

ABSOLUTE LAND SURVEYING AND MAPPING, P.C.
 MAILING ADDRESS ~ 117 NORTH CHATHAM AVENUE, SILER CITY, N.C. 27344
 PHYSICAL ADDRESS ~ 964 EAST STREET, SUITE 210, PITTSBORO, N.C. 27312
 (919) 542-0074 FAX (919)542-3751

JOB NUMBER: 040509
 DATE: FEBRUARY 14, 2006

