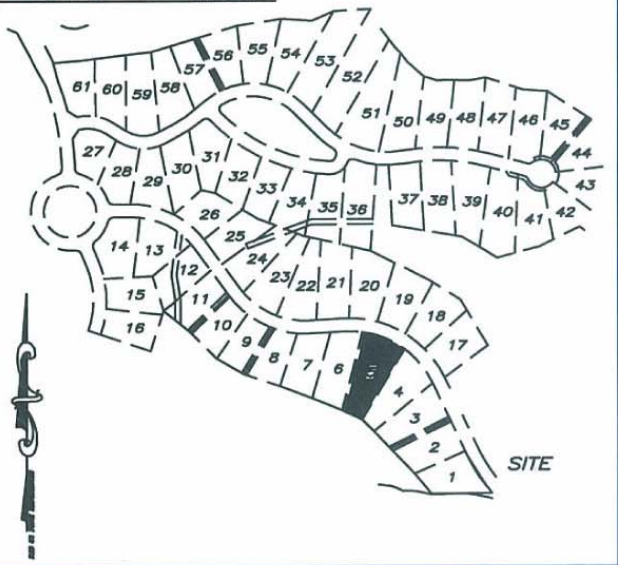


VICINITY MAP



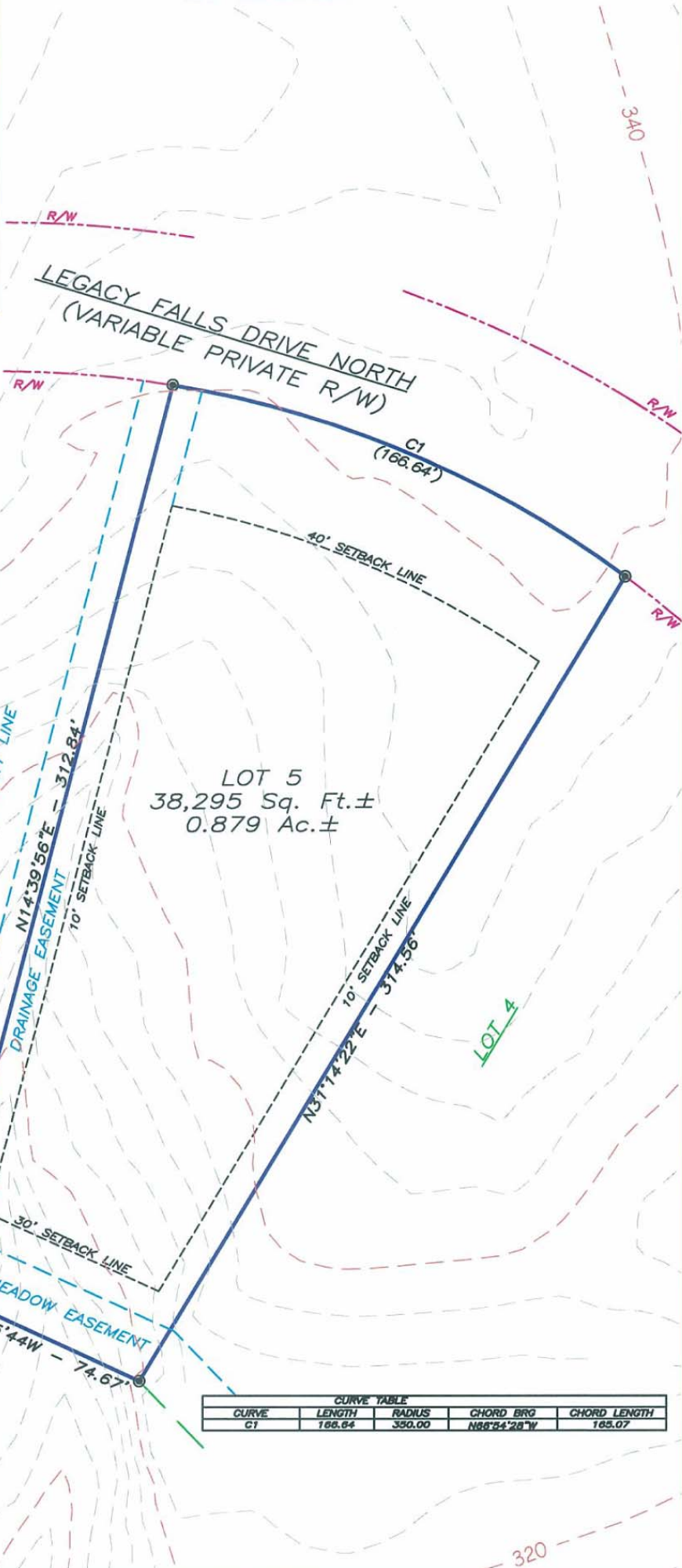
NOTES-

- a.) THERE IS A 10' UTILITY AND MAINTENANCE EASEMENT ACROSS ALL LOT FRONTS THAT INCLUDES PEDESTRIAN WALKWAYS.
- b.) REFER TO RECORDED PLAT FOR EASEMENTS AND RESTRICTIONS.
- c.) THERE IS A 5' DRAINAGE EASEMENT ALONG ALL SIDELINES.

NAD 83 FROM REFERENCES



⊙ BOUNDARY CORNER

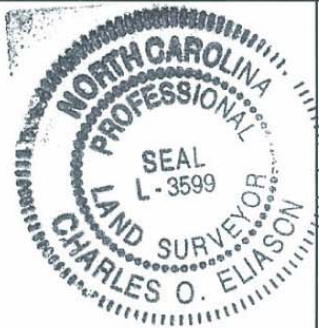


LOT 5
38,295 Sq. Ft. ±
0.879 Ac. ±

CURVE TABLE				
CURVE	LENGTH	RADIUS	CHORD BRG	CHORD LENGTH
C1	166.64	350.00	N88°24'28\"W	165.07

SYMBOL LEGEND

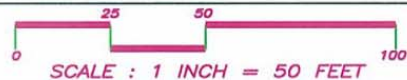
⊙ BOUNDARY CORNER



PLOT PLAN
 "THE LEGACY AT JORDAN LAKE" PHASE ONE - LOT 5
 NEW HOPE TOWNSHIP ~ CHATHAM COUNTY ~ NORTH CAROLINA
 PRELIMINARY NOT FOR SALES, CONVEYANCE, RECORDATION OR CONSTRUCTION

**ABSOLUTE LAND SURVEYING
AND MAPPING, P.C.**

MAILING ADDRESS ~ 117 NORTH CHATHAM AVENUE, SILER CITY, N.C. 27344
 PHYSICAL ADDRESS ~ 964 EAST STREET, SUITE 210, PITTSBORO, N.C. 27312
 (919) 542-0074 FAX (919)542-3751



JOB NUMBER: 040509
 DATE: JANUARY 5, 2006