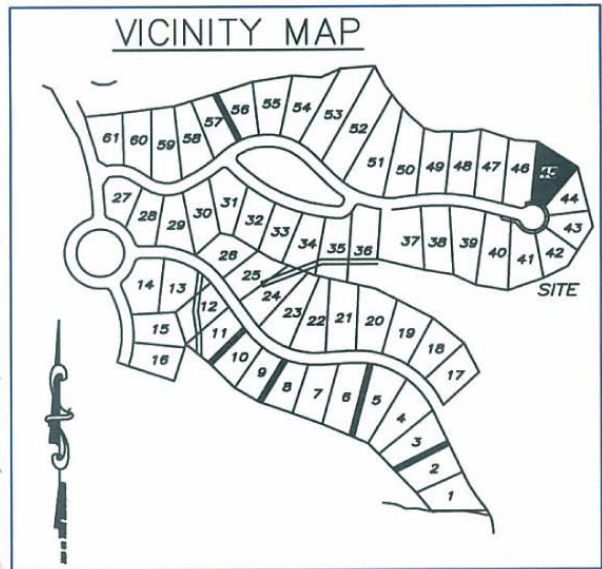
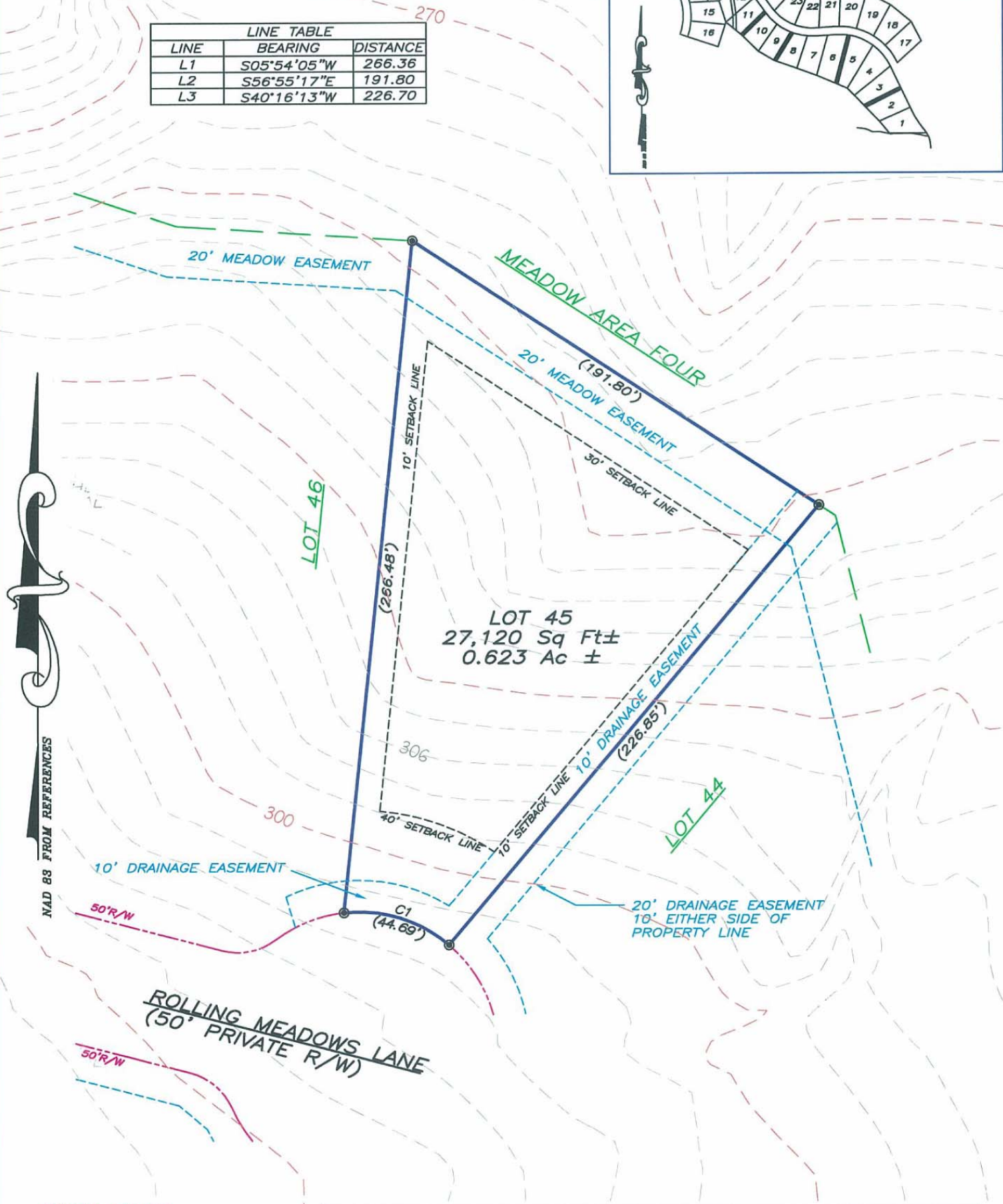


NOTES—

- a.) THERE IS A 10' UTILITY AND MAINTENANCE EASEMENT ACROSS ALL LOT FRONTS THAT INCLUDES PEDESTRIAN WALKWAYS.
- b.) REFER TO RECORDED PLAT FOR EASEMENTS AND RESTRICTIONS.
- c.) THERE IS A 5' DRAINAGE EASEMENT ALONG ALL SIDELINES.



LINE TABLE		
LINE	BEARING	DISTANCE
L1	S05°54'05"W	266.36
L2	S56°55'17"E	191.80
L3	S40°16'13"W	226.70



SYMBOL LEGEND

- BOUNDARY CORNER
- COMPUTED POINT

CURVE TABLE				
CURVE	LENGTH	RADIUS	CHORD BRG	CHORD LENGTH
C1	44.69	55.00	N73°00'18"W	43.47

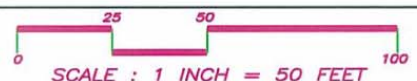
PLOT PLAN

"THE LEGACY AT JORDAN LAKE" PHASE ONE – LOT 45
 NEW HOPE TOWNSHIP ~ CHATHAM COUNTY ~ NORTH CAROLINA

PRELIMINARY NOT FOR SALES, CONVEYANCE, RECORDATION OR CONSTRUCTION

**ABSOLUTE LAND SURVEYING
 AND MAPPING, P.C.**

MAILING ADDRESS ~ 117 NORTH CHATHAM AVENUE, SILER CITY, N.C. 27344
 PHYSICAL ADDRESS ~ 964 EAST STREET, SUITE 210, PITTSBORO, N.C. 27312
 (919) 542-0074 FAX (919)542-3751



JOB NUMBER: 040509
 DATE: FEBRUARY 14, 2006

