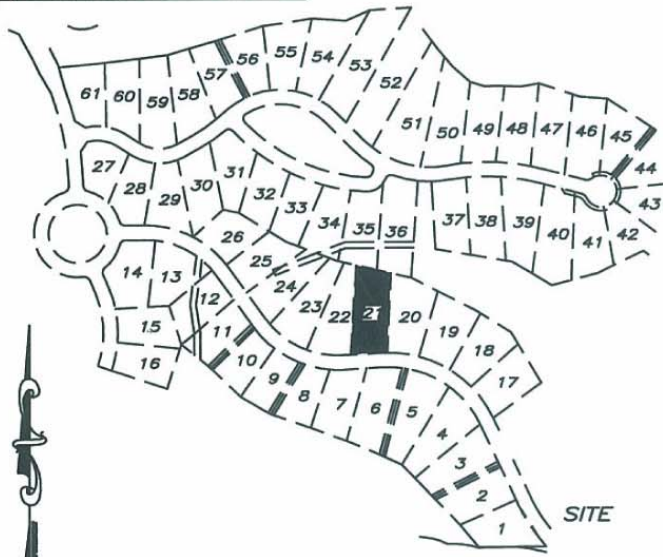


VICINITY MAP

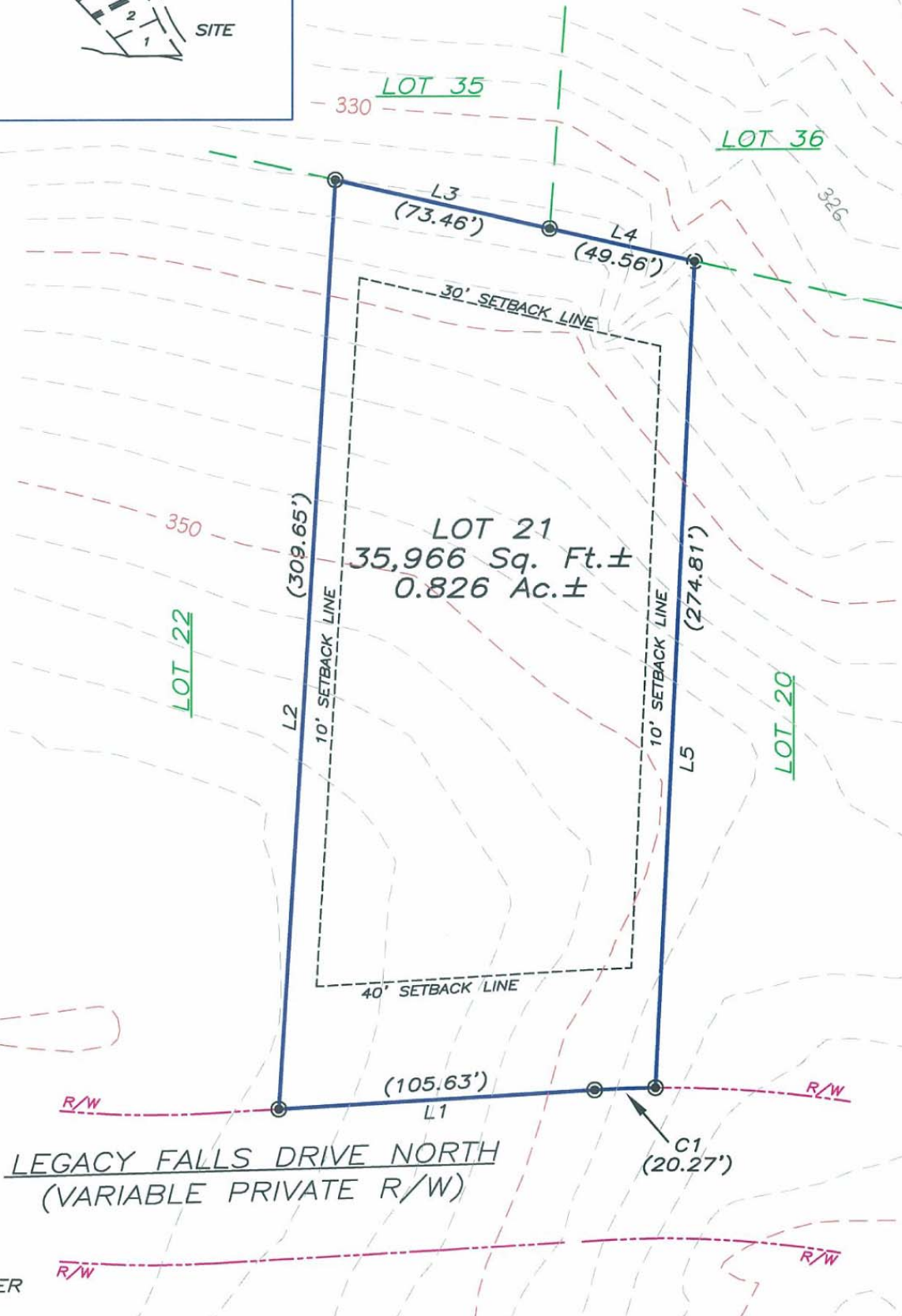


NOTES-

- a.) THERE IS A 10' UTILITY AND MAINTENANCE EASEMENT ACROSS ALL LOT FRONTS THAT INCLUDES PEDESTRIAN WALKWAYS.
- b.) REFER TO RECORDED PLAT FOR EASEMENTS AND RESTRICTIONS.
- c.) THERE IS A 5' DRAINAGE EASEMENT ALONG ALL SIDELINES.

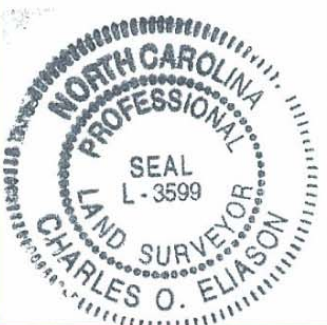
LINE TABLE		
LINE	BEARING	DISTANCE
L1	S86°31'04"W	105.63
L2	N03°26'51"E	309.65
L3	N77°06'25"W	73.46
L4	N77°06'25"W	49.56
L5	N02°40'47"E	274.81

CURVE TABLE			
CURVE	LENGTH	RADIUS	CHORD BRG
C1	20.27	400.00	S87°58'10"W
			CHORD LENGTH
			20.27



SYMBOL LEGEND

- BOUNDARY CORNER
- COMPUTED POINT



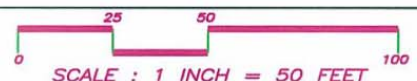
PLOT PLAN

"THE LEGACY AT JORDAN LAKE" PHASE ONE - LOT 21
 NEW HOPE TOWNSHIP ~ CHATHAM COUNTY ~ NORTH CAROLINA

PRELIMINARY NOT FOR SALES, CONVEYANCE, RECORDATION OR CONSTRUCTION

ABSOLUTE LAND SURVEYING
 AND MAPPING, P.C.

MAILING ADDRESS ~ 117 NORTH CHATHAM AVENUE, SILER CITY, N.C. 27344
 PHYSICAL ADDRESS ~ 964 EAST STREET, SUITE 210, PITTSBORO, N.C. 27312
 (919) 542-0074 FAX (919)542-3751



JOB NUMBER: 040509
 DATE: FEBRUARY 14, 2006