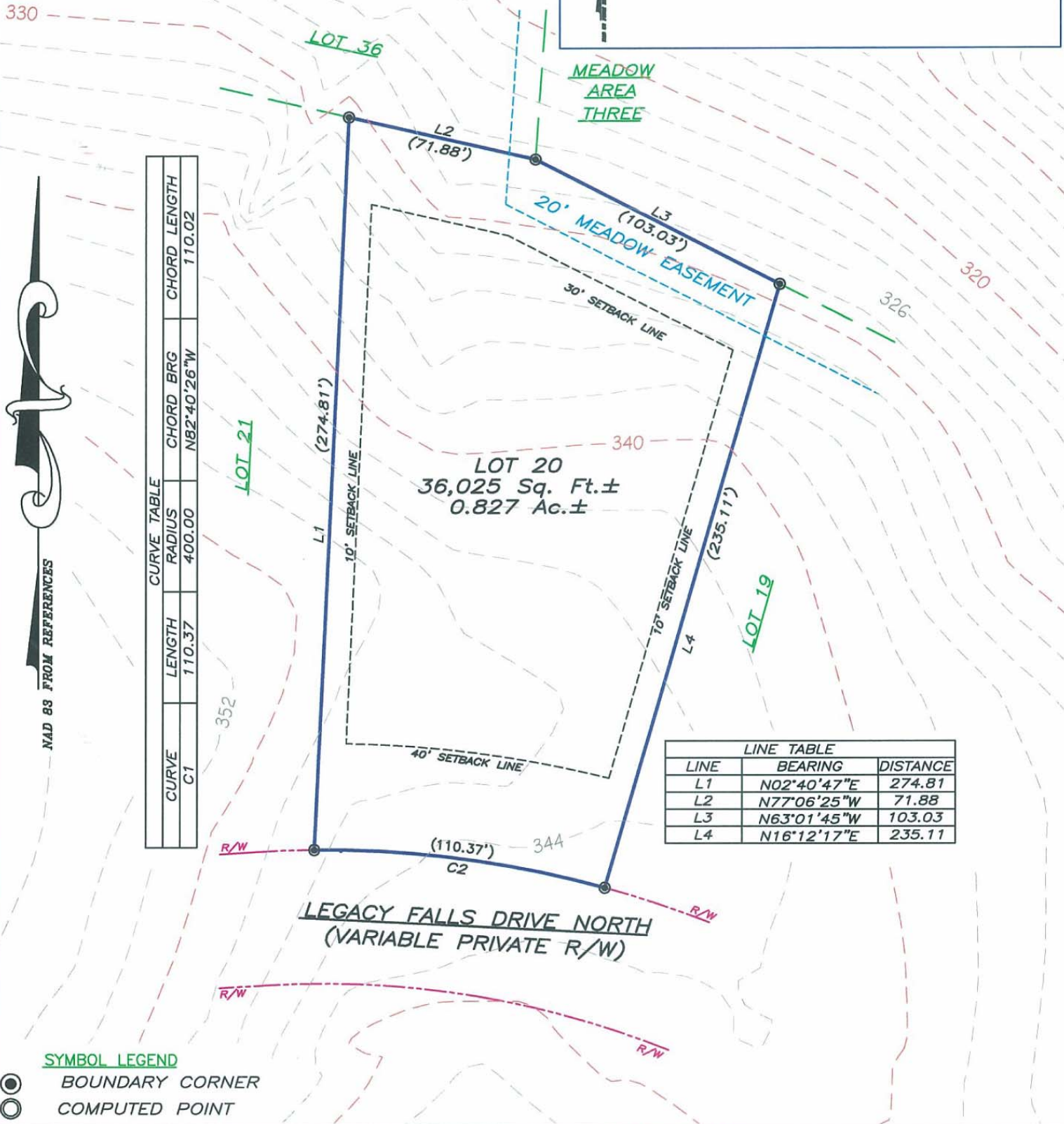
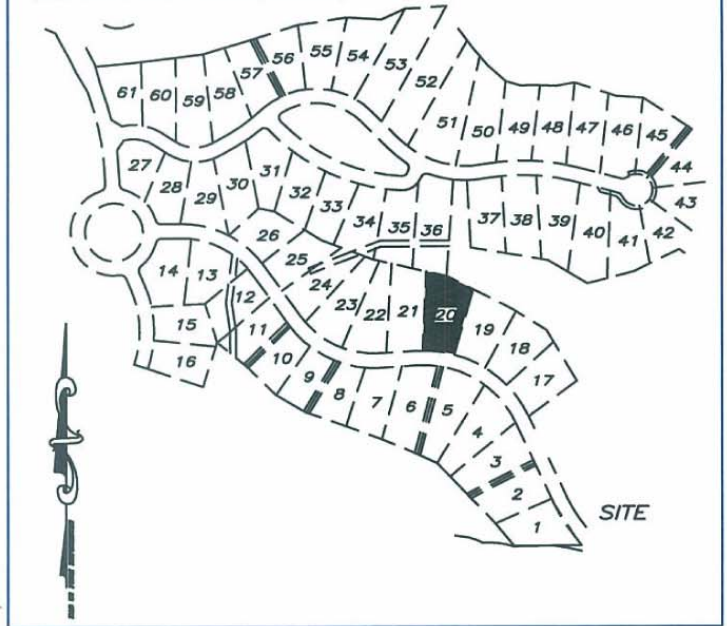


NOTES—

- a.) THERE IS A 10' UTILITY AND MAINTENANCE EASEMENT ACROSS ALL LOT FRONTS THAT INCLUDES PEDESTRIAN WALKWAYS.
- b.) REFER TO RECORDED PLAT FOR EASEMENTS AND RESTRICTIONS.
- c.) THERE IS A 5' DRAINAGE EASEMENT ALONG ALL SIDELINES.

VICINITY MAP

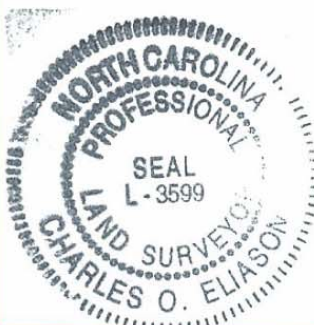


CURVE	LENGTH	RADIUS	CHORD BRG	CHORD LENGTH
C1	110.37	400.00	N82°40'26"W	110.02

LINE	BEARING	DISTANCE
L1	N02°40'47"E	274.81
L2	N77°06'25"W	71.88
L3	N63°01'45"W	103.03
L4	N16°12'17"E	235.11

SYMBOL LEGEND

- BOUNDARY CORNER
- COMPUTED POINT



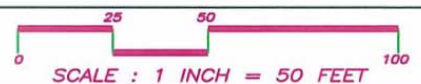
PLOT PLAN

"THE LEGACY AT JORDAN LAKE" PHASE ONE — LOT 20  
 NEW HOPE TOWNSHIP ~ CHATHAM COUNTY ~ NORTH CAROLINA

PRELIMINARY NOT FOR SALES, CONVEYANCE, RECORDATION OR CONSTRUCTION

ABSOLUTE LAND SURVEYING  
 AND MAPPING, P.C.

MAILING ADDRESS ~ 117 NORTH CHATHAM AVENUE, SILER CITY, N.C. 27344  
 PHYSICAL ADDRESS ~ 964 EAST STREET, SUITE 210, PITTSBORO, N.C. 27312  
 (919) 542-0074 FAX (919)542-3751



JOB NUMBER: 040509  
 DATE: FEBRUARY 14, 2006