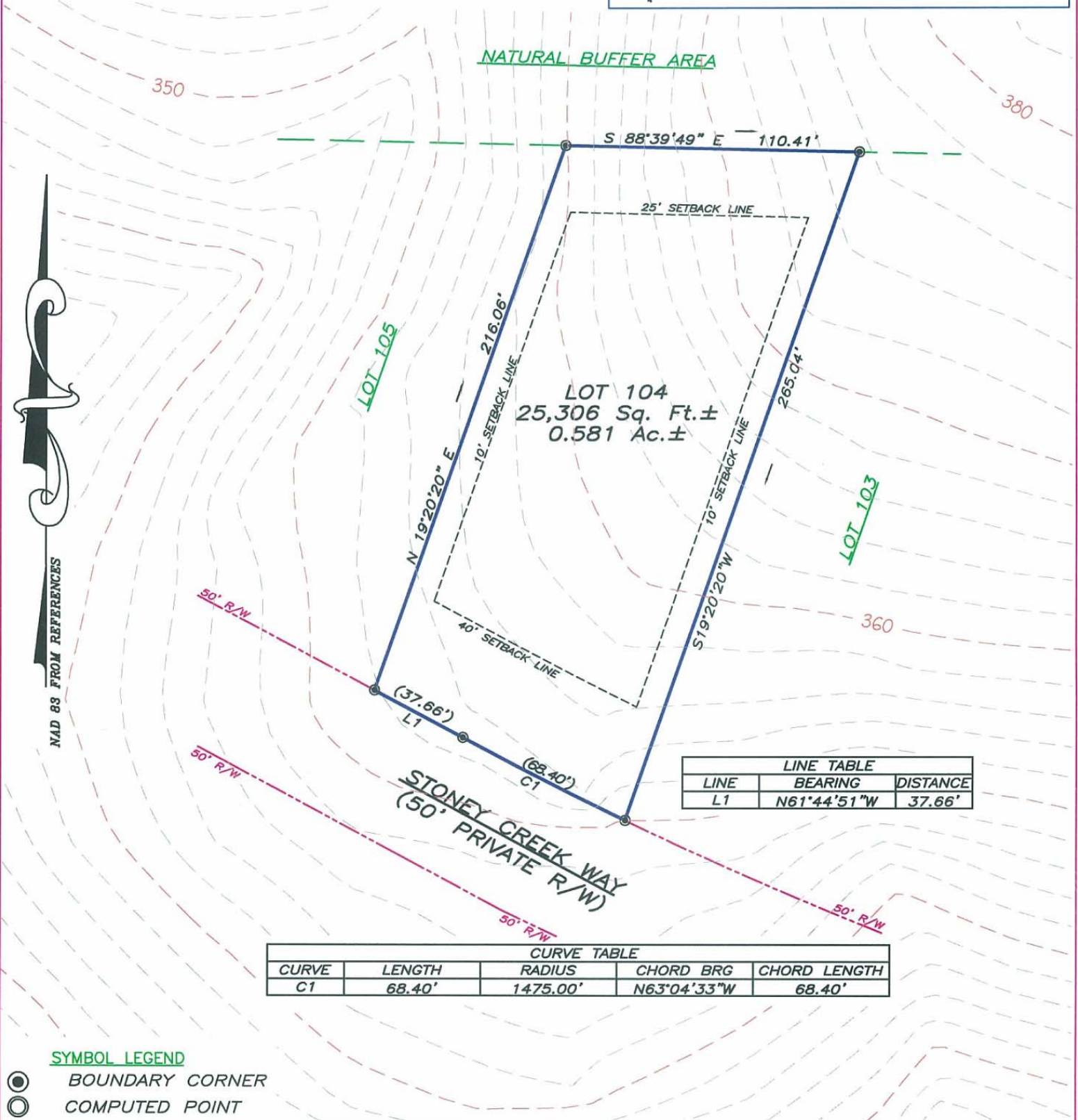
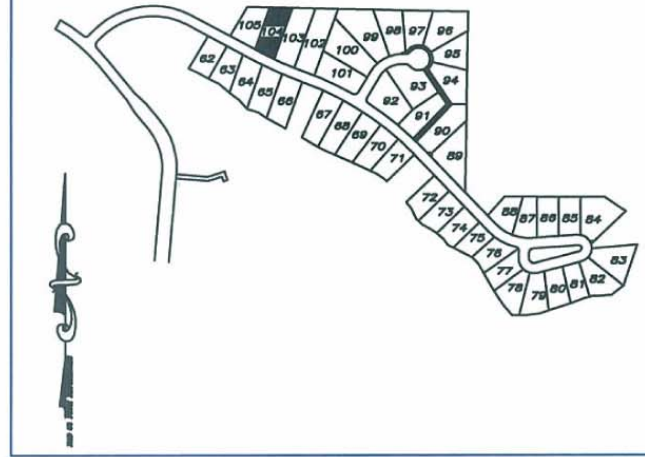


NOTES—

- a.) THERE IS A 10' UTILITY AND MAINTENANCE EASEMENT ACROSS ALL LOT FRONTS THAT INCLUDES PEDESTRIAN WALKWAYS.
- b.) REFER TO RECORDED PLAT FOR EASEMENTS AND RESTRICTIONS.
- c.) THERE IS A 5' DRAINAGE EASEMENT ALONG ALL SIDELINES.

VICINITY MAP



LINE TABLE		
LINE	BEARING	DISTANCE
L1	N61°44'51"W	37.66'

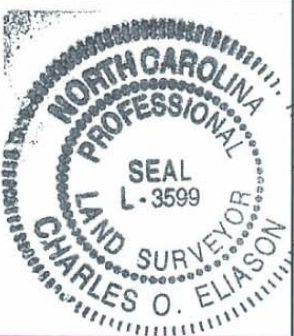
CURVE TABLE				
CURVE	LENGTH	RADIUS	CHORD BRG	CHORD LENGTH
C1	68.40'	1475.00'	N63°04'33"W	68.40'

SYMBOL LEGEND

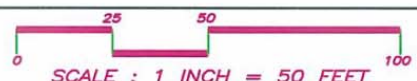
- ⊙ BOUNDARY CORNER
- COMPUTED POINT

PLOT PLAN

"THE LEGACY AT JORDAN LAKE" PHASE ONE — LOT 104
 NEW HOPE TOWNSHIP ~ CHATHAM COUNTY ~ NORTH CAROLINA
 PRELIMINARY NOT FOR SALES, CONVEYANCE, RECORDATION OR CONSTRUCTION



ABSOLUTE LAND SURVEYING AND MAPPING, P.C.
 MAILING ADDRESS ~ 117 NORTH CHATHAM AVENUE, SILER CITY, N.C. 27344
 PHYSICAL ADDRESS ~ 964 EAST STREET, SUITE 210, PITTSBORO, N.C. 27312
 (919) 542-0074 FAX (919)542-3751



JOB NUMBER: 040509
 DATE: FEBRUARY 14, 2006